

TAKE CONTROL WITH



Temperature Control Systems



TEMPERATURE CONTROL

This new microprocessor-based control unit provides efficient temperature control, quick response time, faster and more uniform heating and curing, and the ability to hold precise temperatures.

COST CONTROL

The Delta-Therm unit is a full

featured piece of equipment, yet remains highly cost competitive. It's state-of-the-art technology at a realistic price.

SPACE CONTROL

The compact, but fully-equipped Delta-therm unit has been developed with a "downsized" design, to save valuable floor space.

With Delta-Therm, you get more for less. Faster start-up. Reduced scrap. The space-saving design takes up less room. And the cost is less than most other comparable equipment.

So shouldn't you learn more about Delta-Therm?

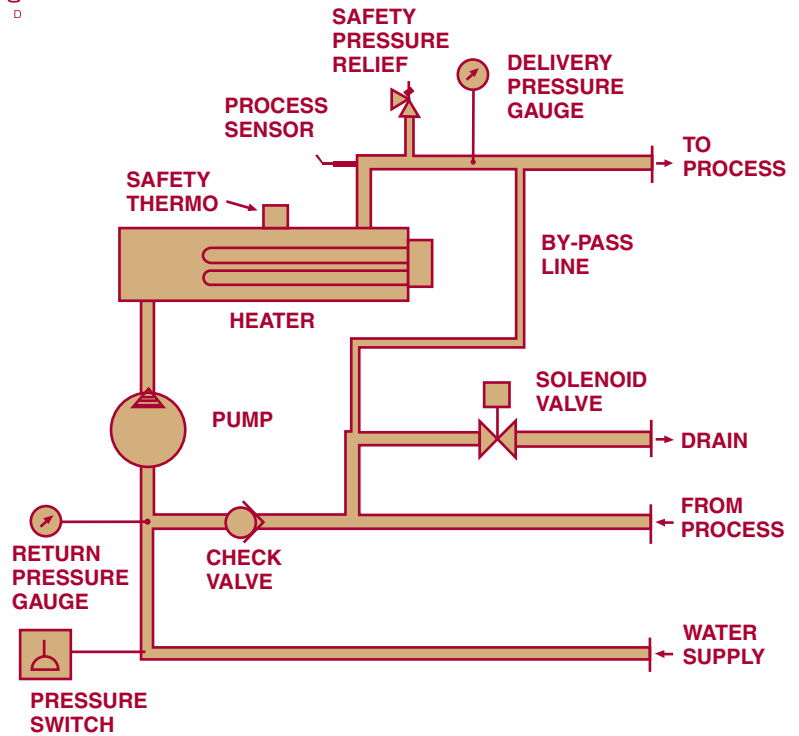
A complete list of specifications, flow diagram and performance curve appear on the opposite page.

SPECIFICATIONS ►

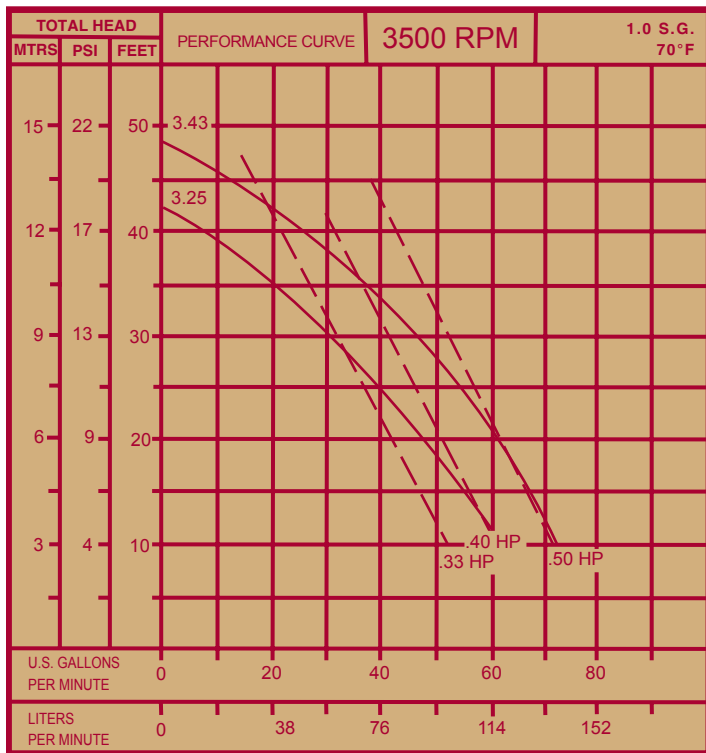


STANDARD FEATURES

- Microprocessor-based, auto tune, PID control
- Non-corrosive piping
- Delivery and return pressure gauges
- Over temperature protection
- Low water pressure protection
- Fused motor and transformer
- Horizontally mounted pump
- Compact modular design
- Built with quality proven components
- Rugged heavy gauge sheet metal cabinet
- Ease of service



SCHEMATIC PIPING DIAGRAM



FLOW CHART

SPECIFICATIONS

- Flanged mounted 4½ KW low watt density heater
- ½ HP pump with capacity of 10 GPM @ 15 PSI
- 250°F fluid operating temperature
- Cooling valve ¼" with ⅜" orifice
- Dimensions: 15 ½"W - 20"D - 14"H

OPTIONS & ACCESSORIES

- 9 KW heating capacity
- ½ HP pump rated at 20 GPM @ 15 PSI
- Mercury contactor
- Electrical main disconnect
- Audible or visual alarms
- Controller options to include RS 485 communications

FOR FURTHER INFORMATION, PLEASE CALL OUR TOLL FREE NUMBER:

OR WRITE US AT DELTA T SYSTEMS, INC., 2171 HIGHWAY 175, RICHFIELD, WI 53076
FAX: 262-628-0332, E-MAIL: experience@deltatsys.com

1-800-733-4204