

# MORE CAN EQUAL LESS!

**W**hen you purchase a Delta T oil circulating temperature control unit it adds up to more benefits for you:

## MORE PRECISE CONTROL

Each unit features a digital, PID, microprocessor-based "dual display" programmable controller (commercially available), that continually learns your processing parameters to ensure accurate control which leads to higher productivity.

## MORE FLOW

Standard units utilize a rugged, positive displacement, mechanical seal pump, which provides consistent flow of oil at all times.

## MORE PEACE OF MIND

All Delta T oil units are built to NEMA 1 Electrical Standards, NEC electrical code conformance, and include safety features to protect the unit, plant wiring, and operating personnel.

## MORE SYSTEM EFFICIENCY

Sound engineering and fluid dynamic principles are obvious in all Delta T products. Heating elements are staged in a series configuration which increases the velocity of fluid across the elements resulting in superior, heat transfer efficiency. This extends the fluid life and minimizes premature heater failure.

## MORE SYSTEM RELIABILITY

Built by skilled craftsmen with components that meet ANSI standards, Delta T oil units are designed to the highest standards for consistent performance week after week, month after month, year after year. They are also CSA and UL recognized. The heavy gauge, sheet metal cabinet provides structural integrity for the unit.

## IN THE FINAL EQUATION

- ▲ LESS DOWNTIME
- ▲ LESS AGGRAVATION
- ▲ LESS MAINTENANCE
- ▲ LESS DOLLARS SPENT



Hot Oil Systems





## STANDARD FEATURES

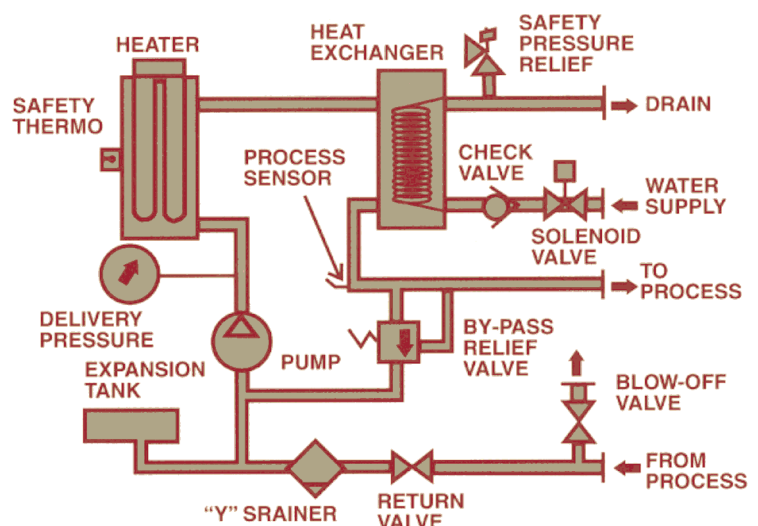
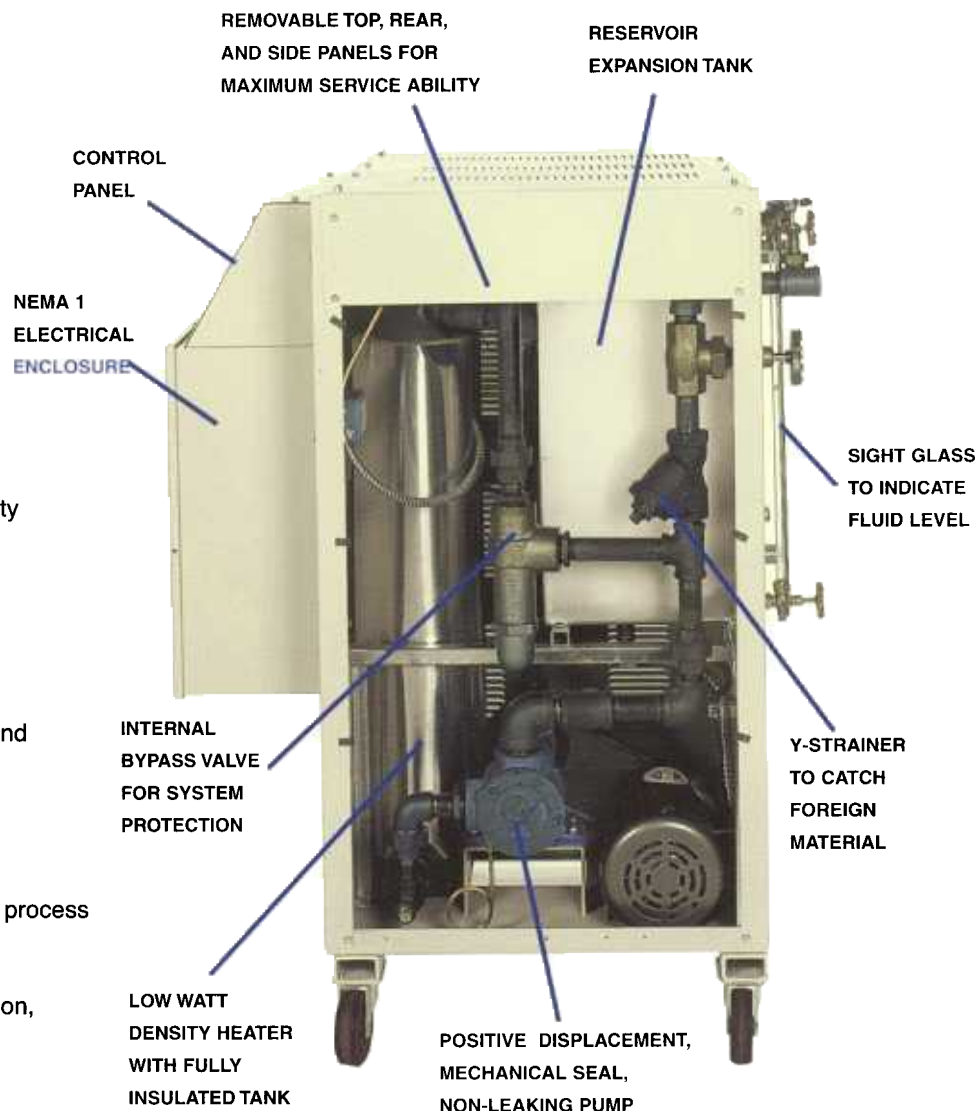
- Operating range to 550°F (288°C)
- Microprocessor-based, PID, dual display digital controller (commercially available)
- 10gpm to 24gpm, positive displacement, non-leaking, mechanical seal pump
- 12kw to 36kw low watt density heating capacity
- Single and dual zone cabinet available
- Internal bypass to protect the pump, heating element and heat transfer fluid
- Over temperature safety thermostat
- Fused protection on motor, heating element and primary and secondary side of transformer
- Grounded control circuit
- Motor overload protection
- Pressure gauge showing delivery pressure to process
- Low system pressure protection
- Status lights to indicate system mode (power on, heating on cooling on)

## OPTIONS:

- Automatic cooling feature
- Audible and visual alarms
- Pump reverse
- Customer-preferred controllers
- For options not listed, please consult our factory
- Pumping capacities up to 90 gpm

## DIMENSIONS:

- 32"W x 34"D x 48"H or 48"W x 34"D x 48"H depending on unit capacity



**SCHEMATIC PIPING DIAGRAM**

FOR FURTHER INFORMATION, PLEASE CALL OUR TOLL FREE NUMBER: **1-800-733-4204**

OR WRITE US AT DELTA T SYSTEMS, INC., 2171 HIGHWAY 175, RICHFIELD, WI 53076  
 FAX: 414-628-0332, E-MAIL: [experience@deltatsys.com](mailto:experience@deltatsys.com)

**PERFORMANCE ▲ RELIABILITY ▲ INTEGRITY ▲ SERVICE**